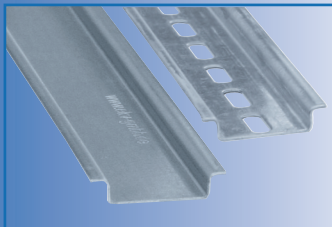


DIN-Profilschienen

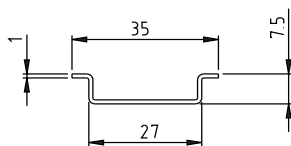
Hutprofile mit einer Länge von 2 Metern

Profil 35 x 7,5

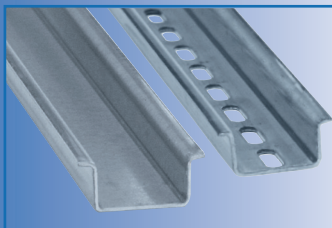


nach EN 60715

Oberfläche		Lochung		Artikelnummer	VPE
verzinkt	chromatiert*	ungelocht	Typ		
x		x		3575ZU	80m
	x	x		3575CRU	80m
x			A	3575ZG	80m
x			B	3575ZG-M6	80m
x			C	3575ZG-WM	80m
	x		A	3575CRG	80m
	x		B	3575CRG-M6	80m
	x		C	3575CRG-WM	80m

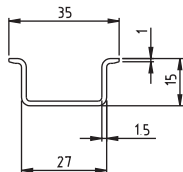


Profil 35 x 15

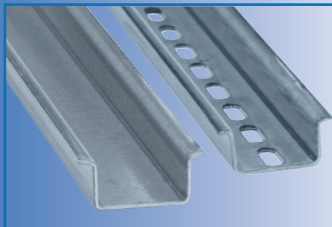


nach EN 60715

x		x		3515ZU	40m
	x	x		3515CRU	40m
x			A	3515ZG	40m
x			B	3515ZG-M6	40m
x			C	3515ZG-WM	40m
	x		A	3515CRG	40m
	x		B	3515CRG-M6	40m
	x		C	3515CRG-WM	40m

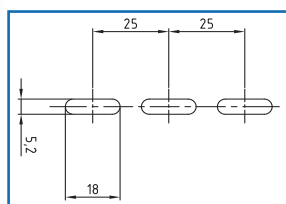
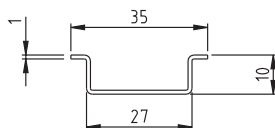


Profil 35 x 10

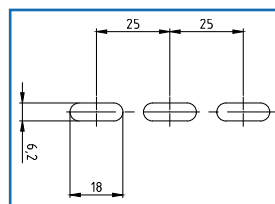


nach EN 60715

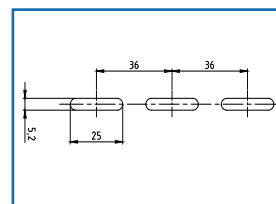
x		x		3510ZU	60m
	x	x		3510CRU	60m
x			A	3510ZG	60m
	x		A	3510CRG	60m



Lochung A



Lochung Typ B



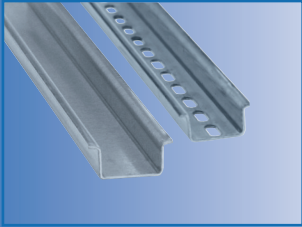
Lochung Typ C

*chromatiert chrom 6 frei gemäß RoHS

DIN-Profilschienen

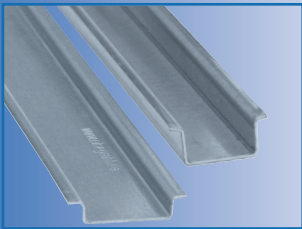
Hutprofile mit einer Länge von 2 Metern

Profil 15 x 5,5



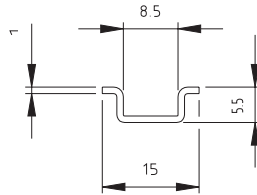
nach EN 60715

Profil 35 x 7,5 und
Profil 35 x 15

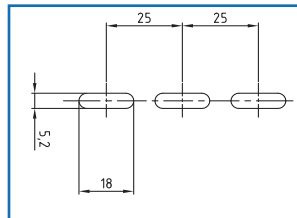
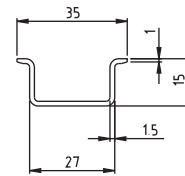
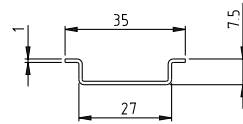


nach EN 60715

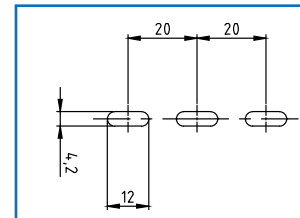
Oberfläche		Lochung		Artikel- nummer	VPE
verzinkt	chromatiert*	ungelocht	Typ		
x		x		1555ZU	80m
	x	x		1555CRU	80m
x			D	1555ZG	80m
	x		D	1555CRG	80m



V2A Edelstahl	ungelocht	Typ	
x	x	3575V2AU	80
x	x	3515V2AU	40
x		A 3575V2AG	80
x		A 3515V2AG	40



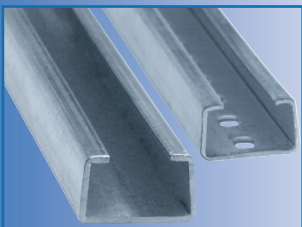
Lochung A



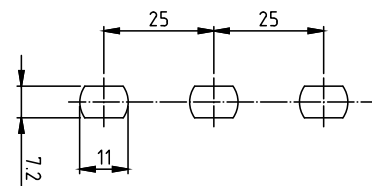
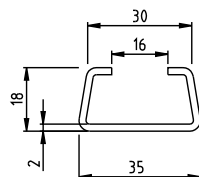
Lochung D

C-Profilschienen mit einer Länge von 2 Metern

Profil 35 x 18



Oberfläche		Lochung		Artikel- nummer	VPE
verzinkt	chromatiert*	ungelocht	gelocht		
x		x		3518ZU	20m
x			x	3518ZG	20m

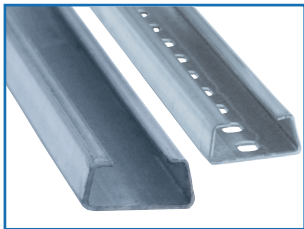


*chromatiert chrom 6 frei gemäß RoHS

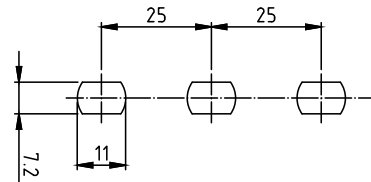
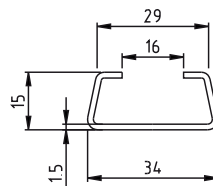
DIN-Profileschienen

C-Profileschienen mit einer Länge von 2 Metern

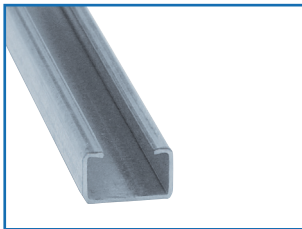
Pro il 34 x 15



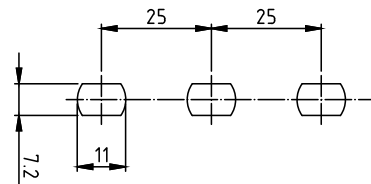
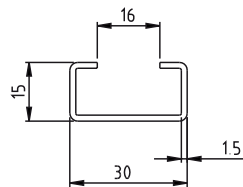
Oberfläche		Lochung		Artikelnummer	VPE
verzinkt	chromatiert*	ungelocht	gelocht		
x		x		3415ZU	40m
x			x	3415ZG	40m



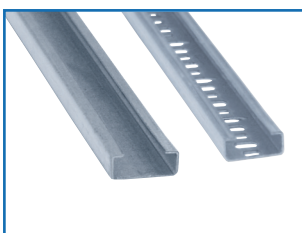
Profil 30 x 15



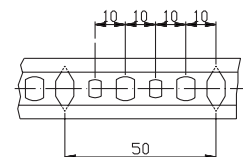
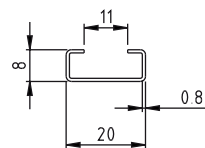
x		x		3015ZU	40m
	x	x		3015CRU	40m
x			x	3015ZG	40m
	x		x	3015CRG	40m



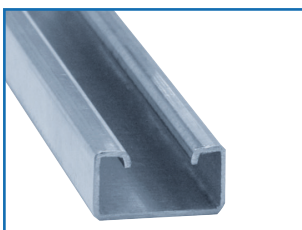
Profil 20 x 8



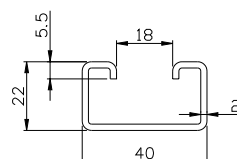
x		x		2008ZU	48m
x			x	2008ZG	48m



Profil 40 x 22



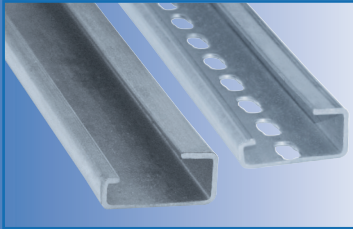
x		x		4022ZU	20m
	x	x		4022CRU	20m



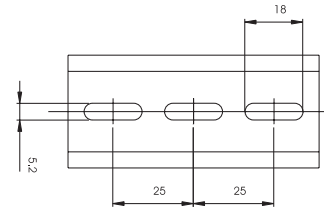
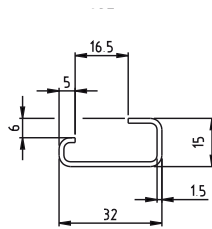
DIN-Profilschienen

G-Profilschienen mit einer Länge von 2 Metern

Profil 32 x 15



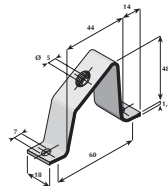
Oberfläche		Lochung		Artikelnummer	VPE
verzinkt	chromatiert*	ungelocht	gelocht		
x		x		3215GZU	40m
	x	x		3215GCRU	40m
x			x	3215GZG	40m
	x		x	3215GCRG	40m



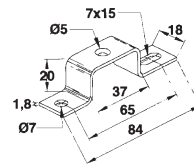
*chromatiert chrom 6 frei gemäß RoHS

Zubehör

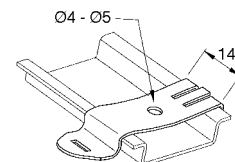
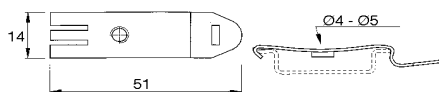
Schrägmontagewinkel



Abstandhalter



FIX-Clip



Artikelnummer	Gewinde	VPE Stück
9000-20M5	M5	50
9000-20M6	M6	50

9002-20M5	M5	50
9002-20M6	M6	50

3402104	M4	100
3402105	M5	100

Sämtliche Schienen sind auch in Eisenblank auf Anfrage lieferbar.

Schienen mit längeren Abmessungen auf Anfrage.

Gerne längen wir Ihnen die Profile auch auf Sonderlängen ab.

Sonderanfertigungen mit besonderen Bohrungen möglich.

BLECHfix GmbH

Op de Elg 53

22393 Hamburg Germany

Telefon: +49(0)40-601 02 27

Telefax: +49(0)40-601 02 28

Internet: www.Blechfix.com

E-Mail: info@Blechfix.de